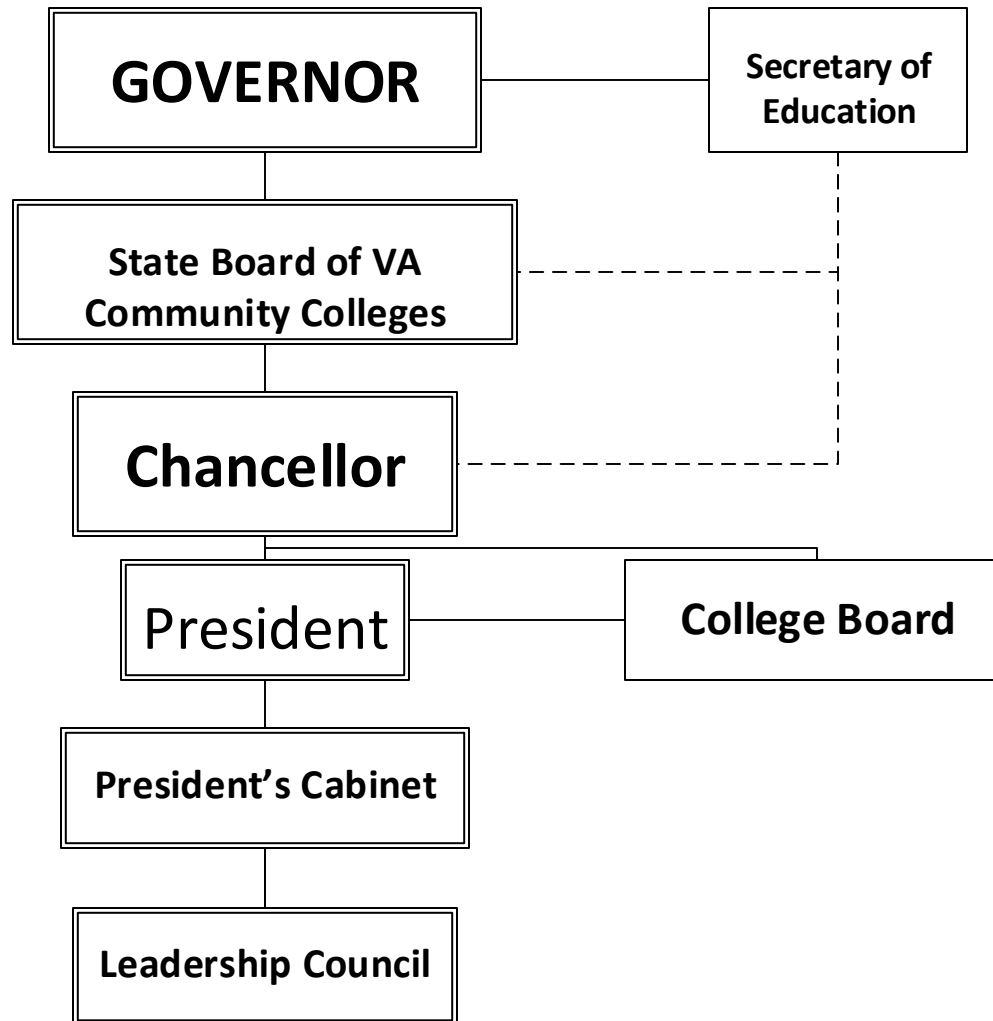
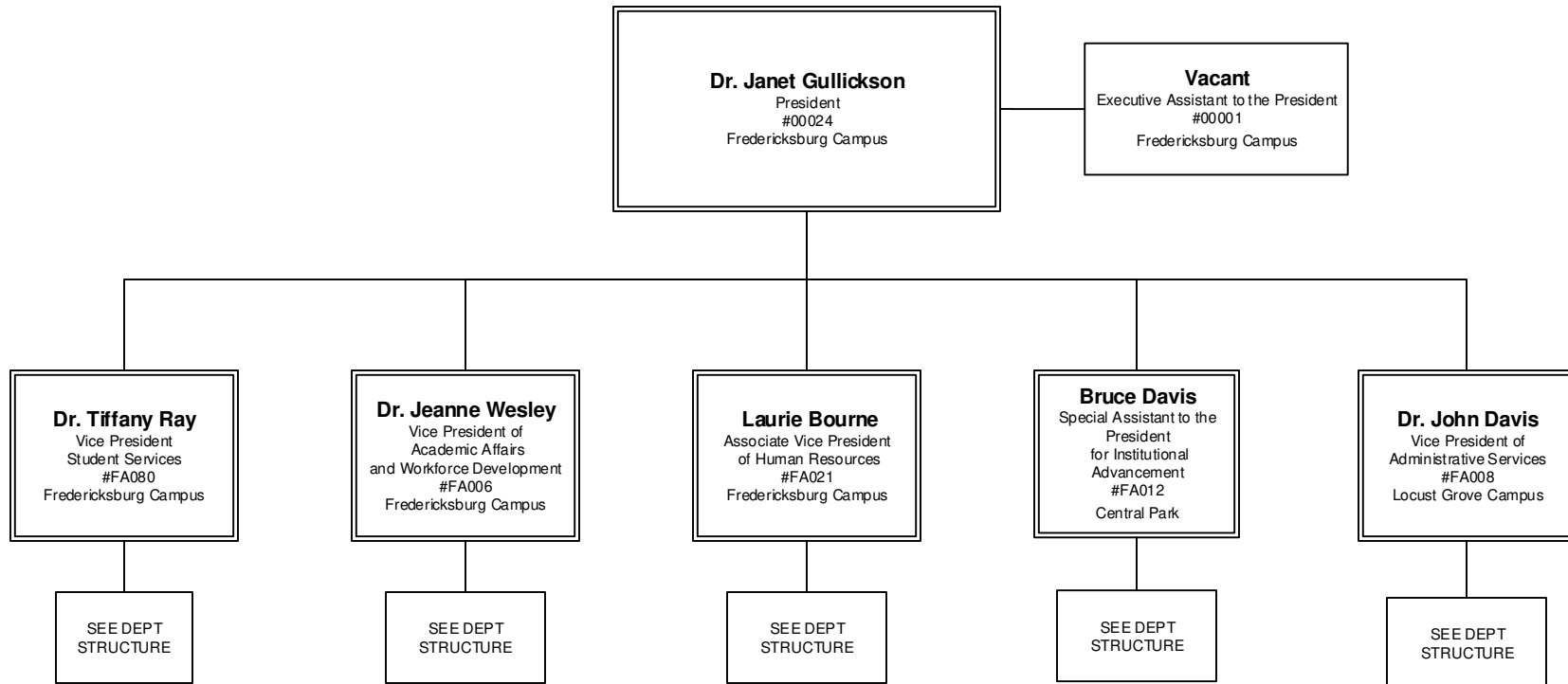


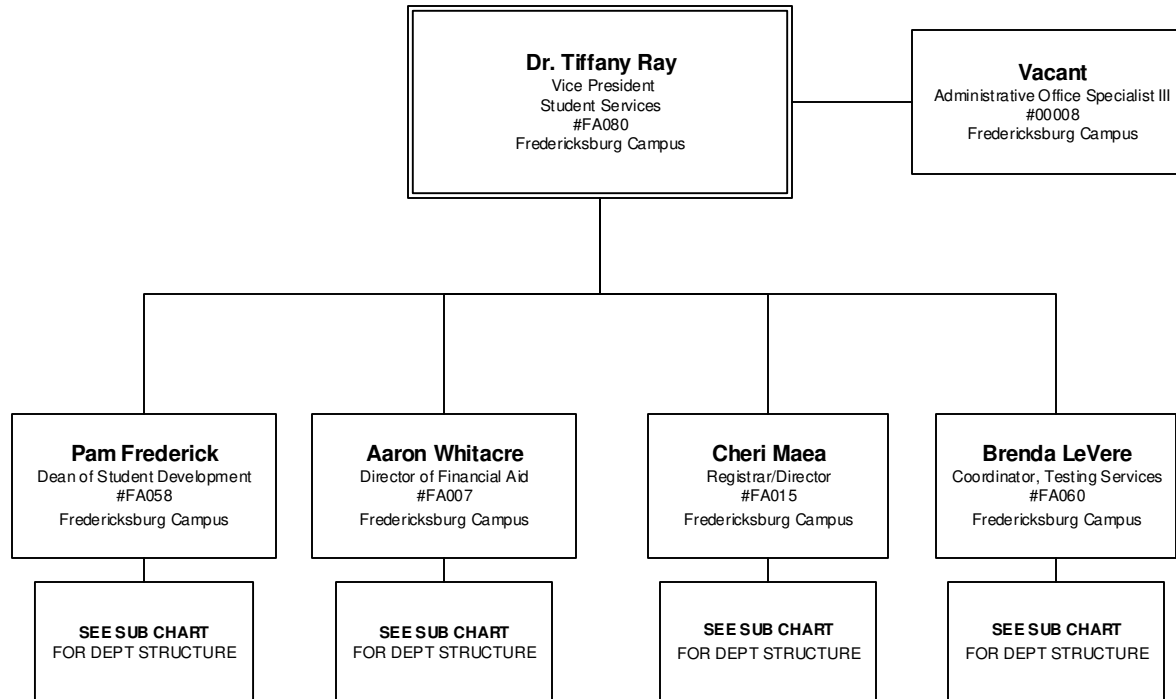
# GERMANNA COMMUNITY COLLEGE SHARED GOVERNANCE



# OFFICE OF THE PRESIDENT

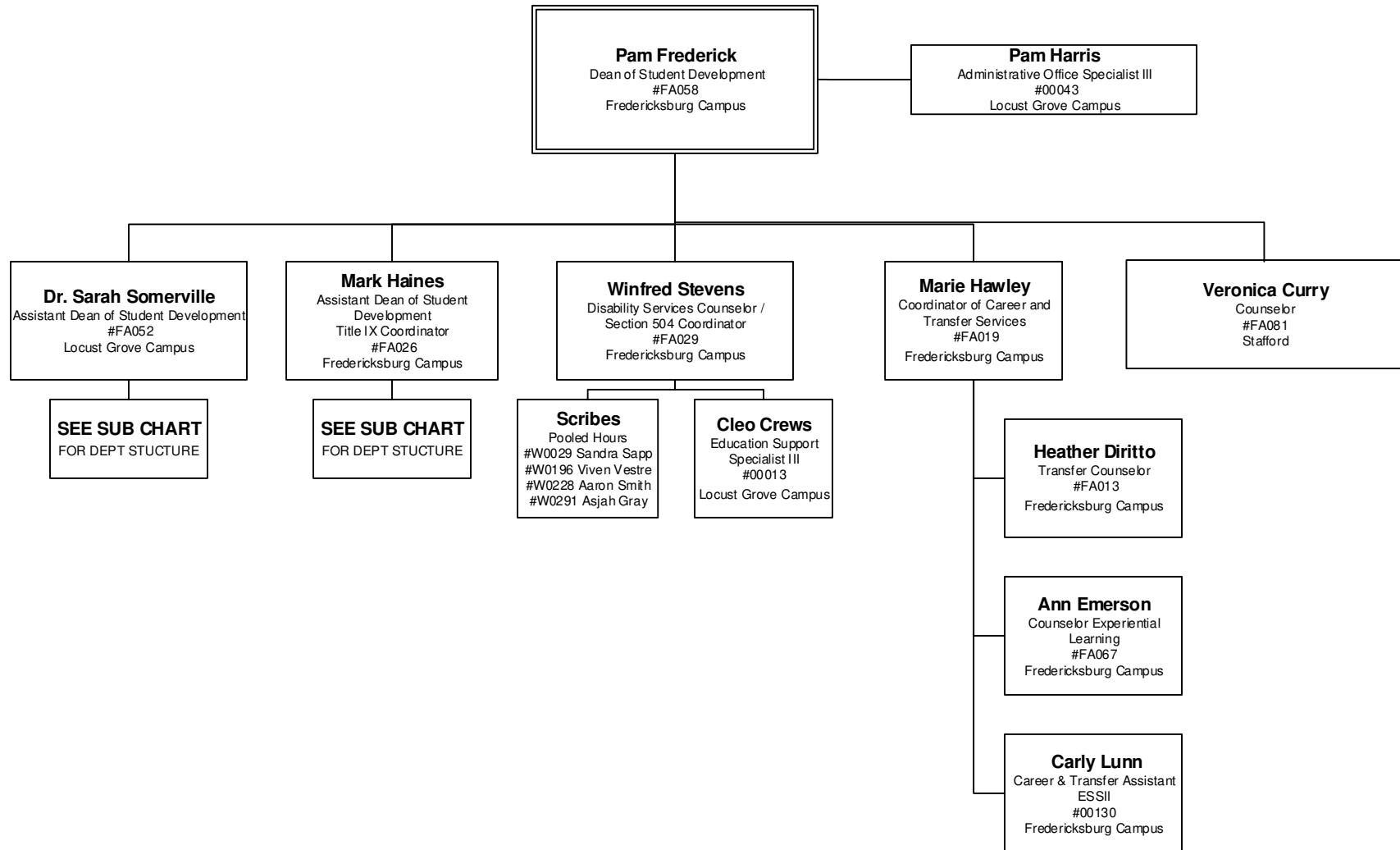


# STUDENT SERVICES



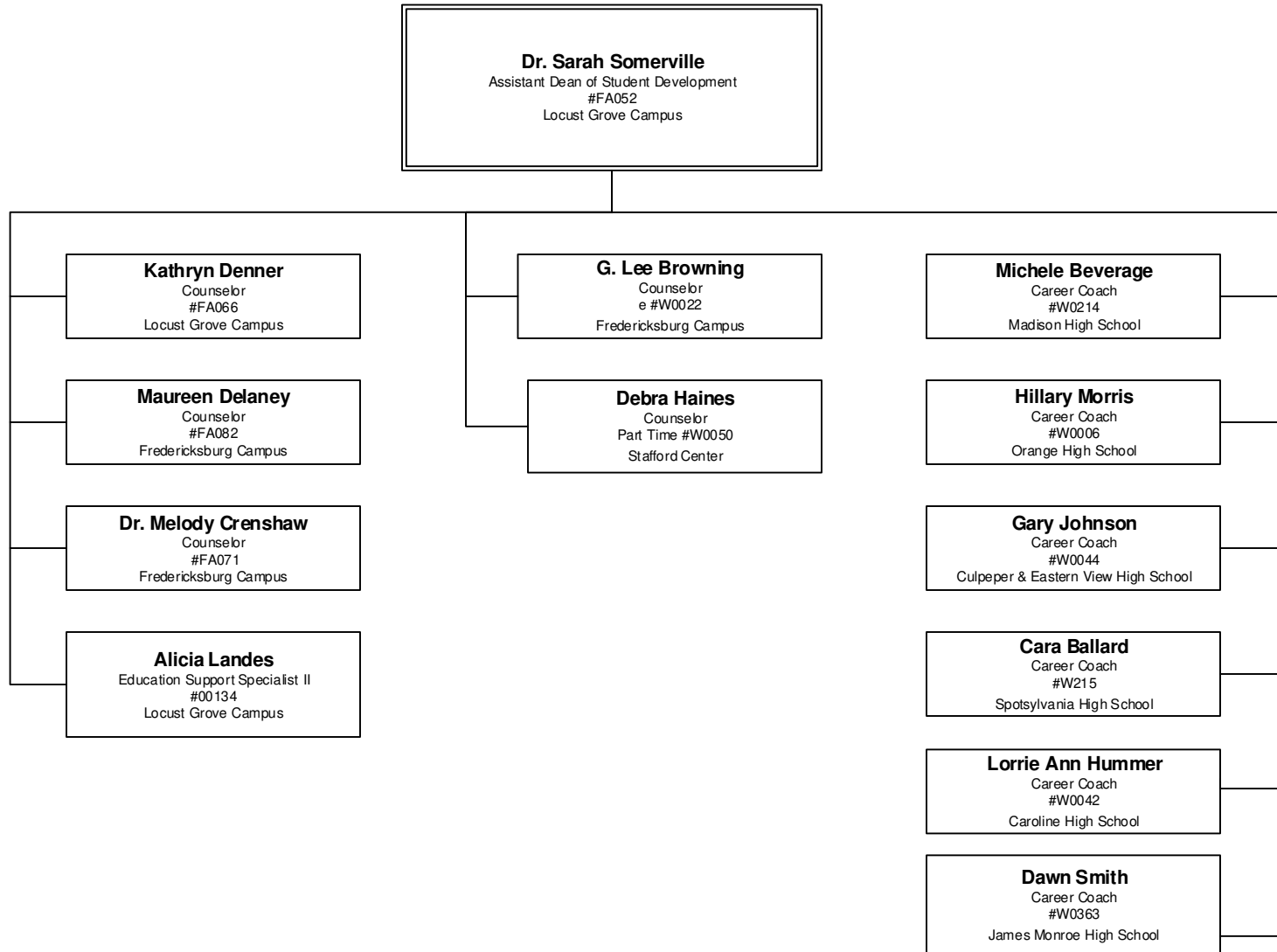
# STUDENT SERVICES

## STUDENT DEVELOPMENT



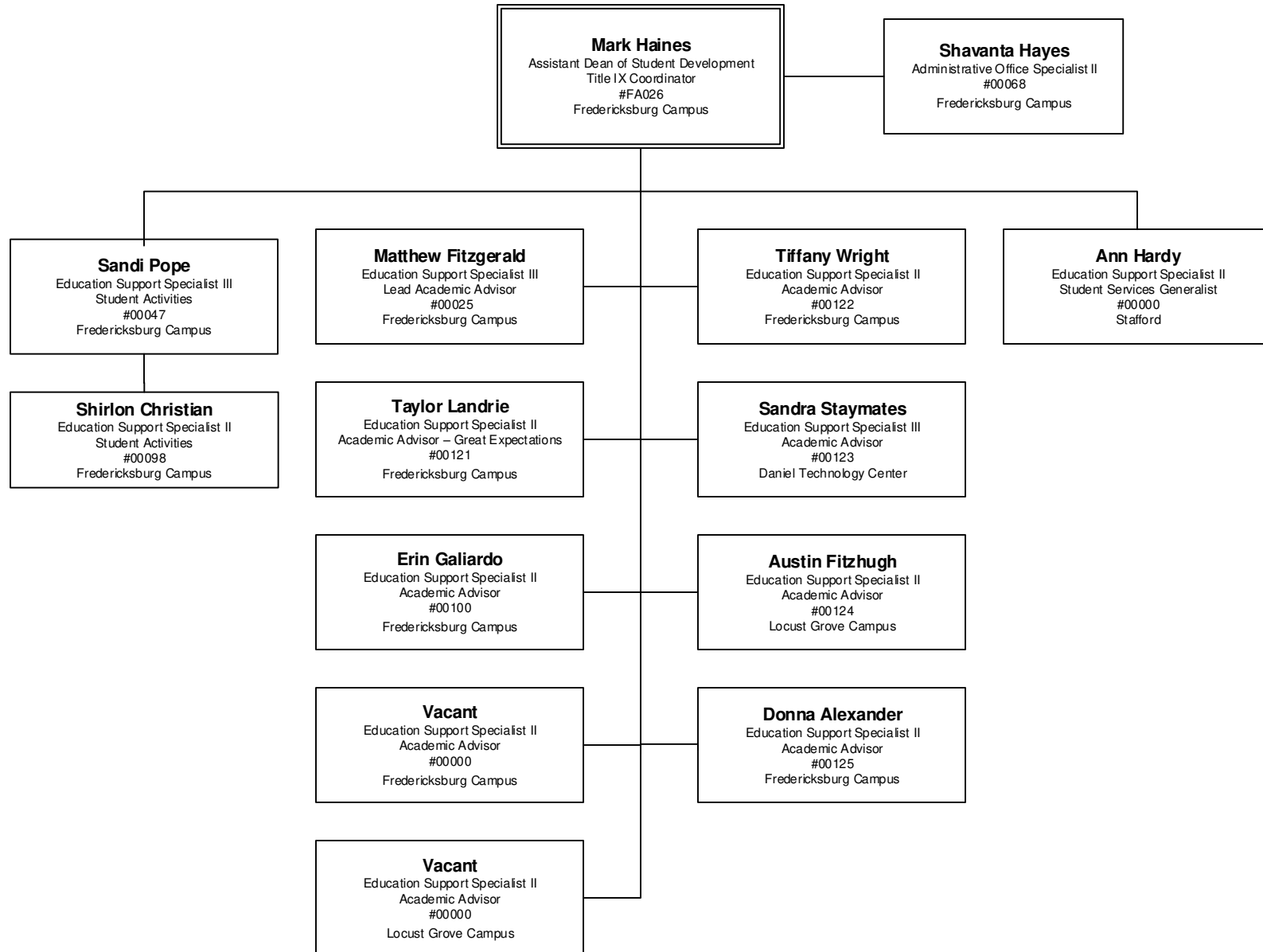
# STUDENT SERVICES

## STUDENT COUNSELING



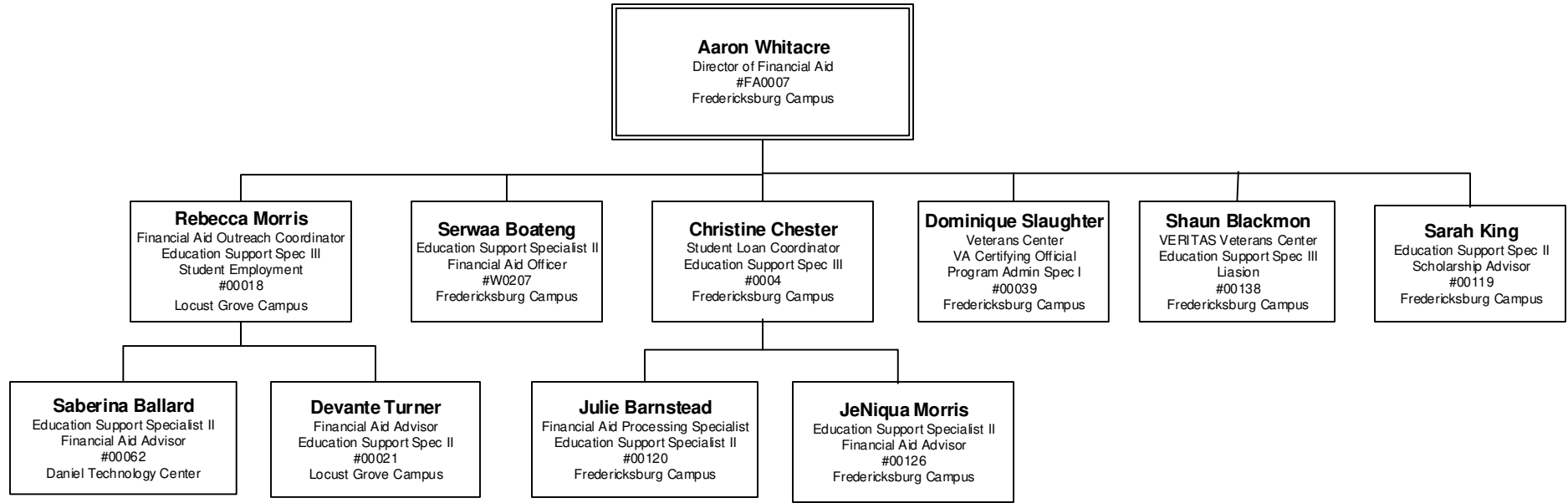
# STUDENT SERVICES

## STUDENT ENGAGEMENT

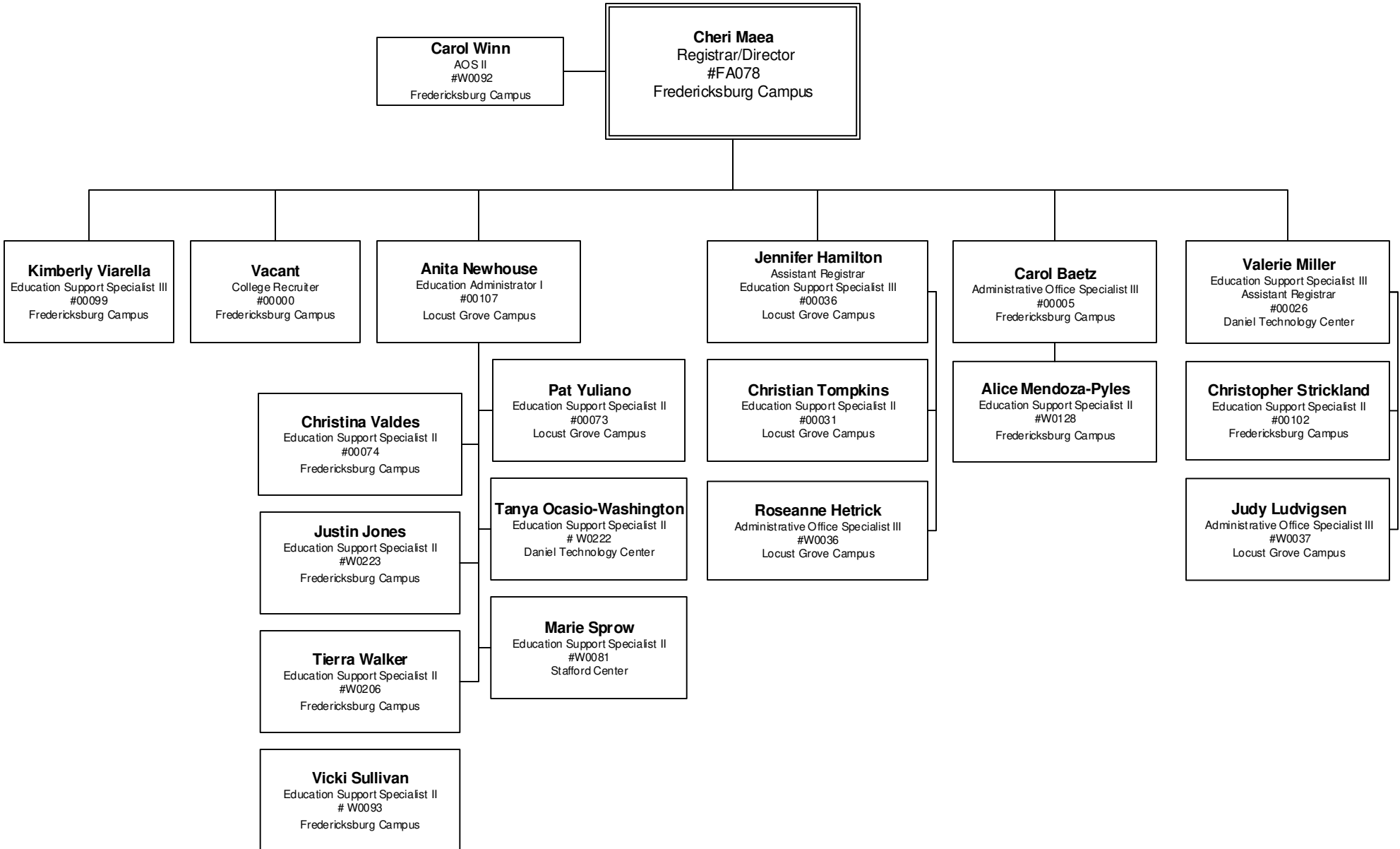


# STUDENT SERVICES

## FINANCIAL AID AND VETERANS CENTER



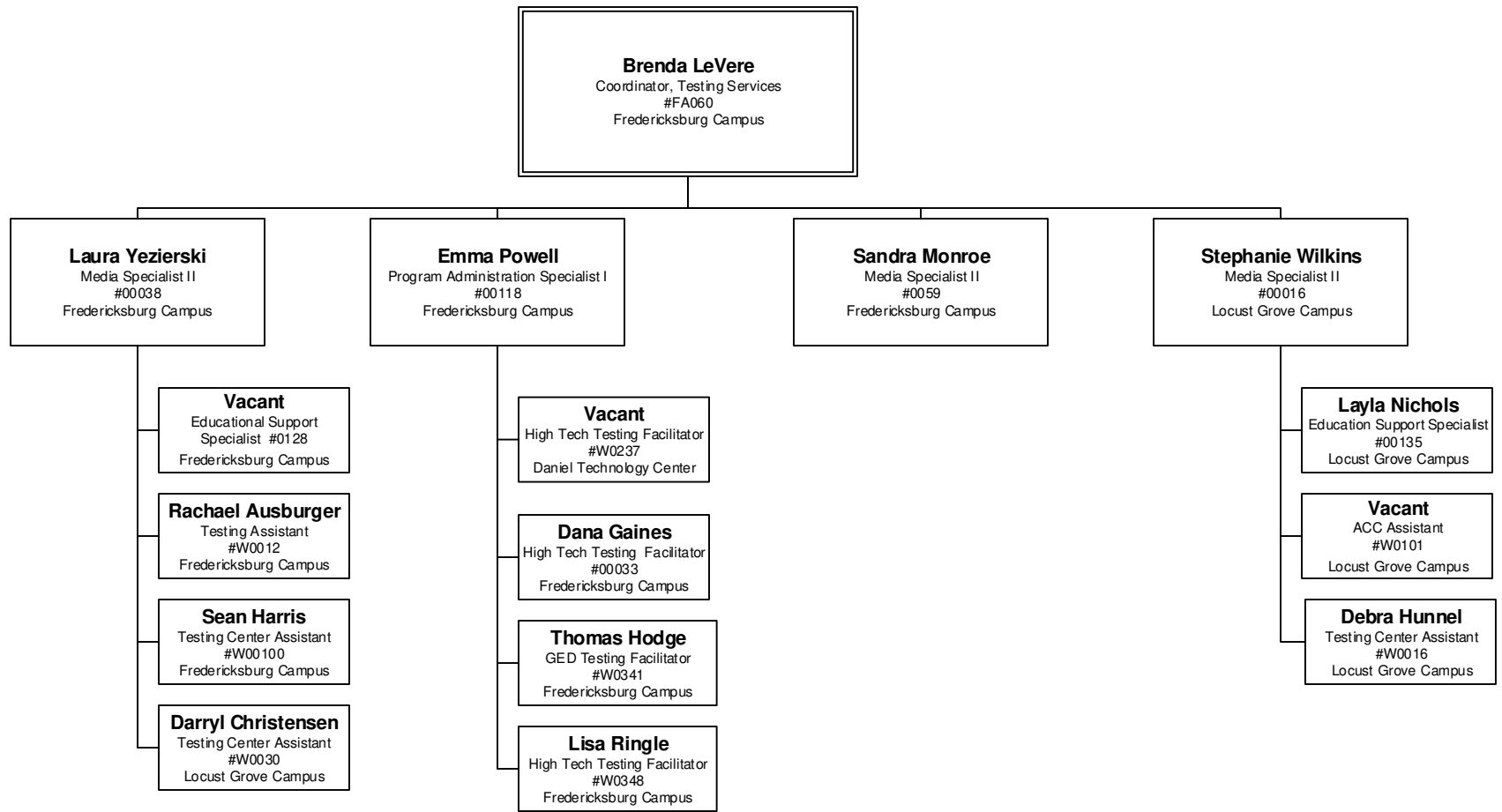
# STUDENT SERVICES ENROLLMENT SERVICES



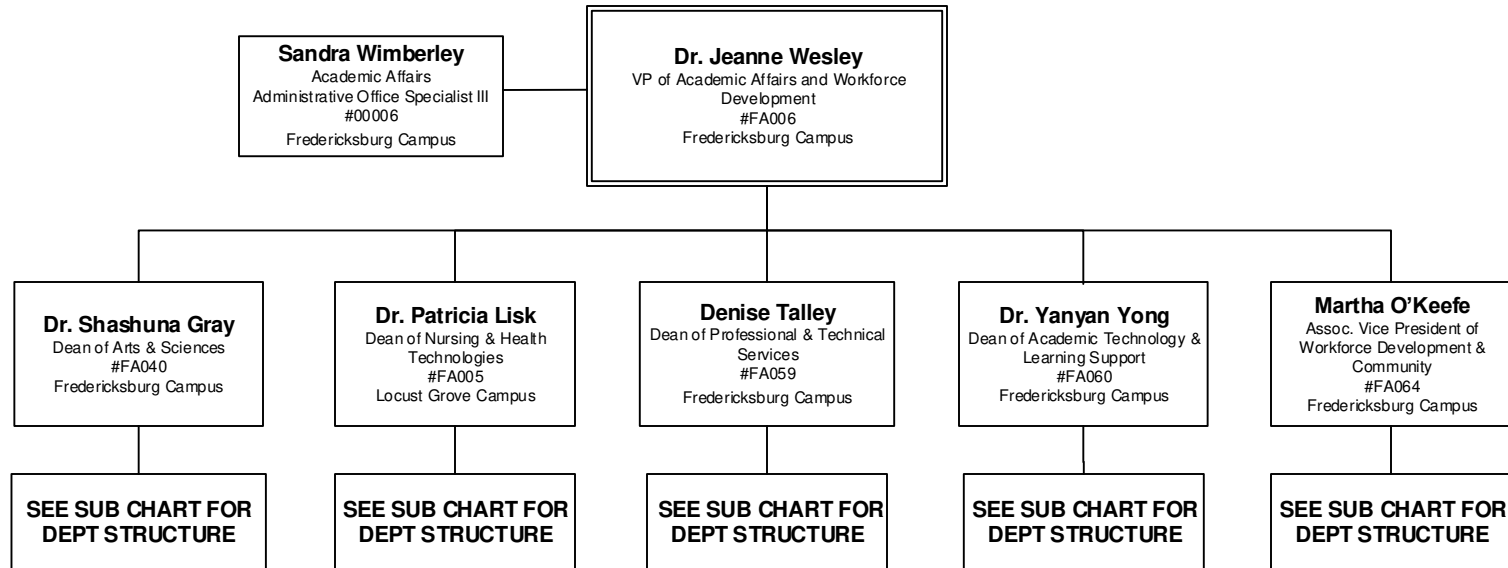


# STUDENT SERVICES

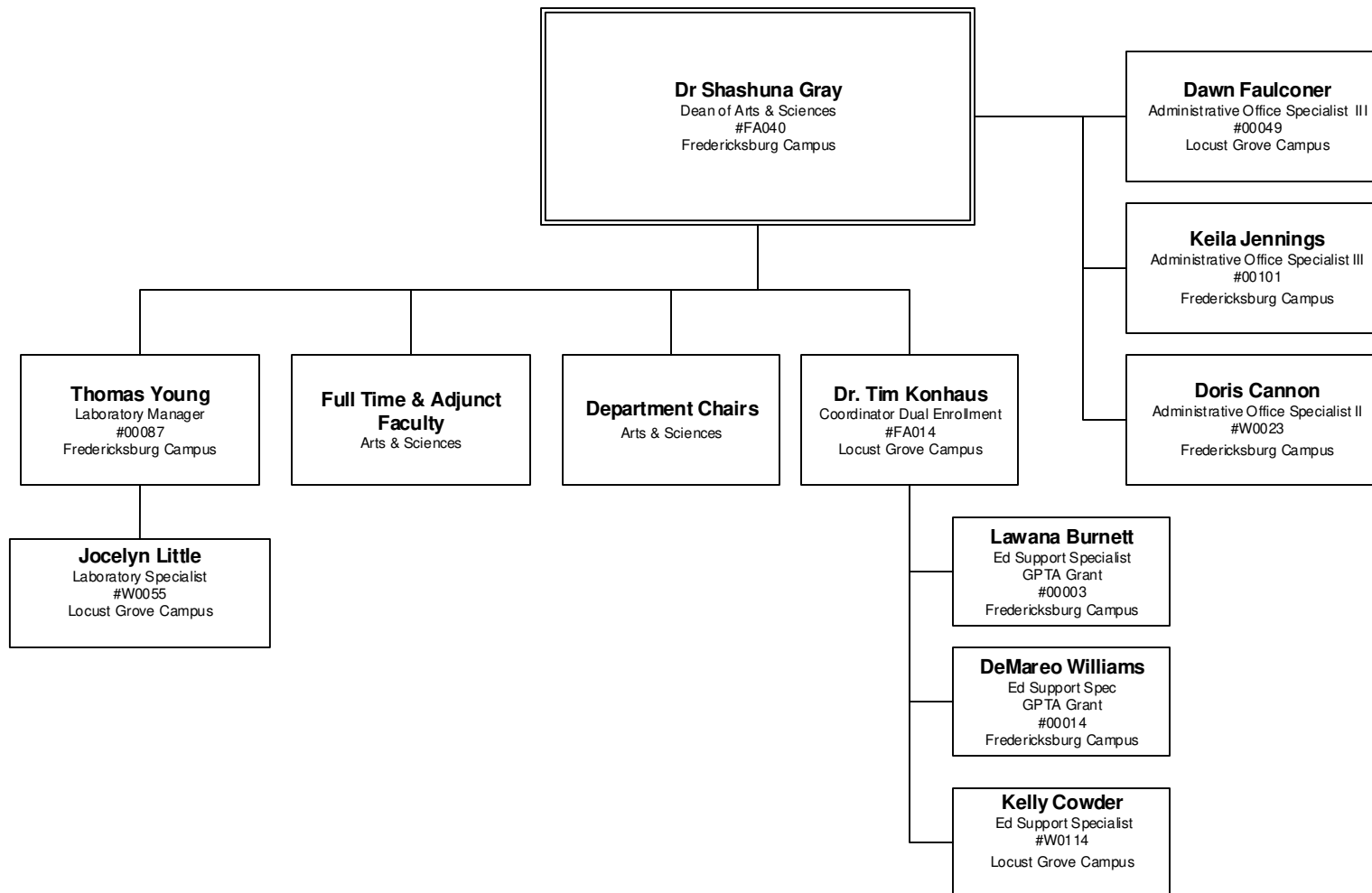
## ACADEMIC COMPUTER CENTER AND TESTING SERVICES



# ACADEMIC AFFAIRS AND WORKFORCE DEVELOPMENT

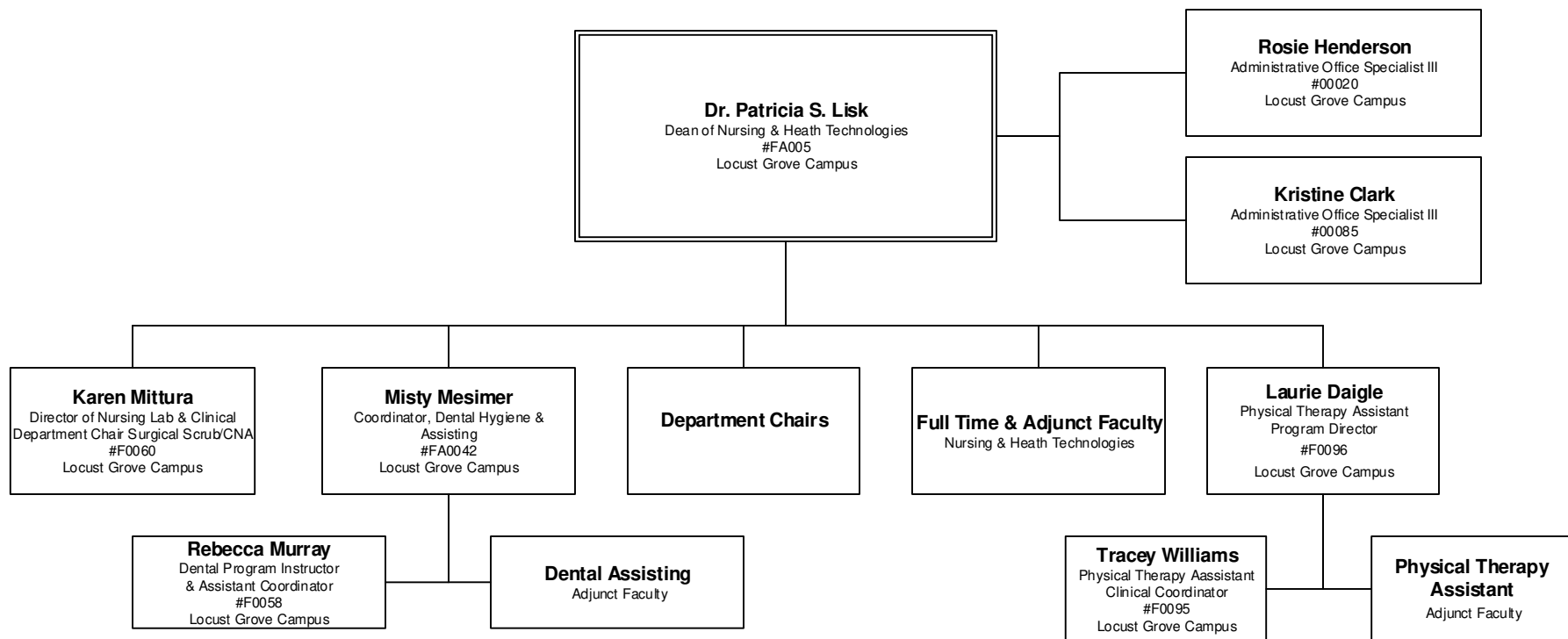


# ACADEMIC AFFAIRS AND WORKFORCE DEVELOPMENT INSTRUCTION – ARTS AND SCIENCES



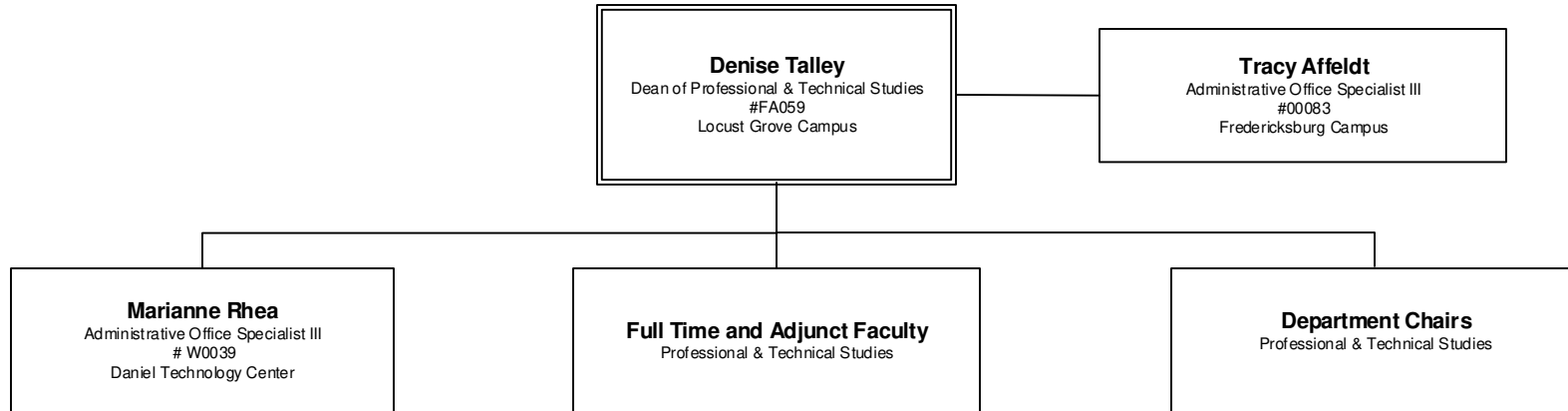
# ACADEMIC AFFAIRS AND WORKFORCE DEVELOPMENT

## NURSING AND HEALTH TECHNOLOGIES



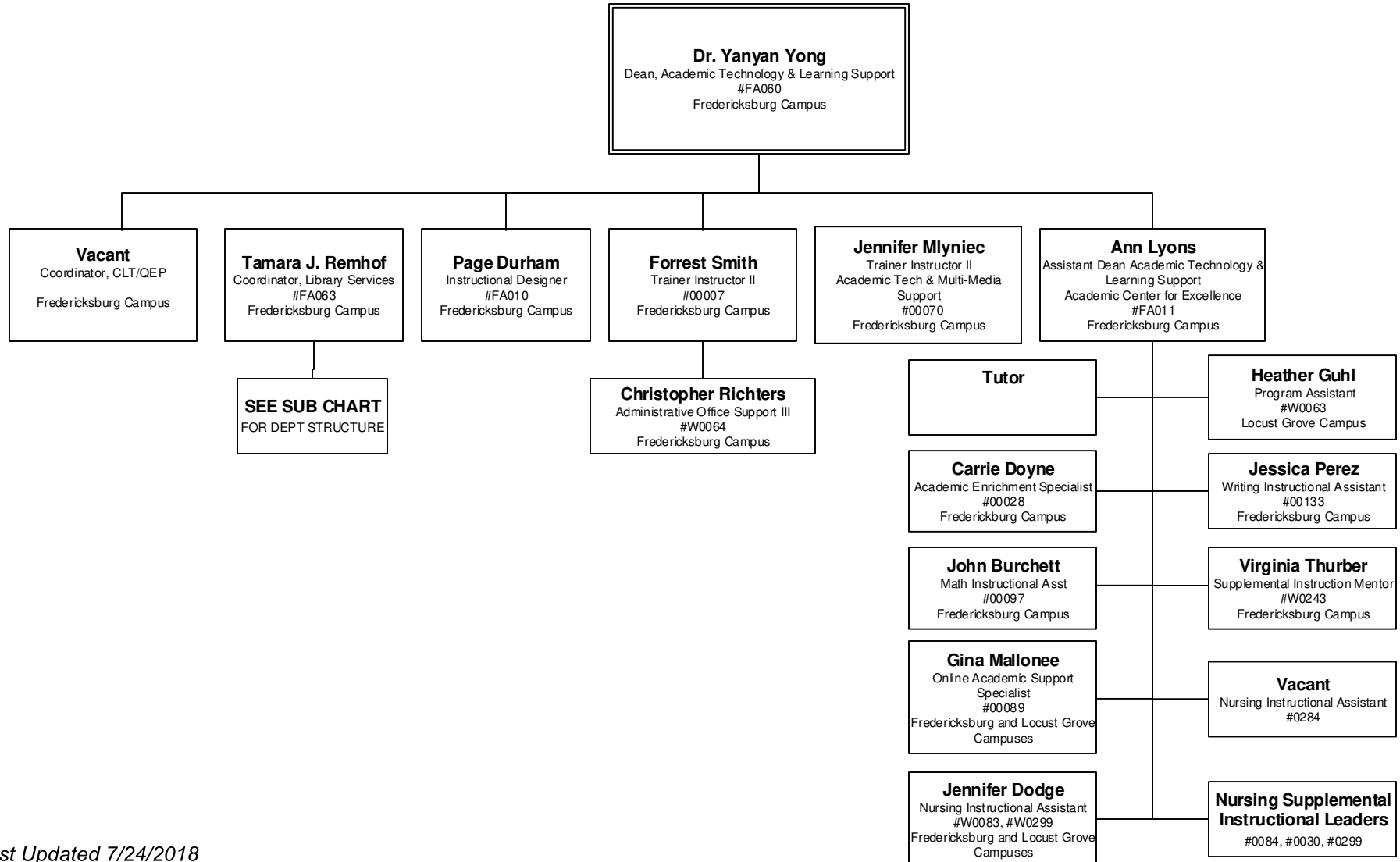
# ACADEMIC AFFAIRS AND WORKFORCE DEVELOPMENT

## INSTRUCTION – PROFESSIONAL AND TECHNICAL STUDIES

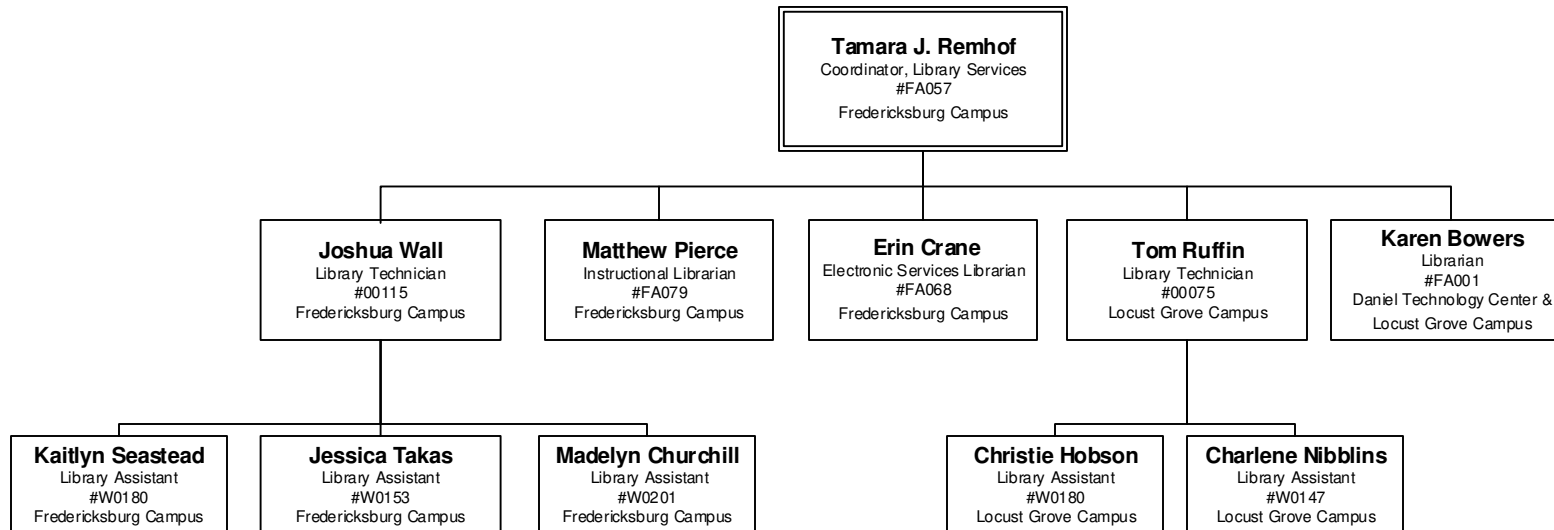


# ACADEMIC AFFAIRS AND WORKFORCE DEVELOPMENT

## ACADEMIC TECHNOLOGY AND LEARNING SUPPORT

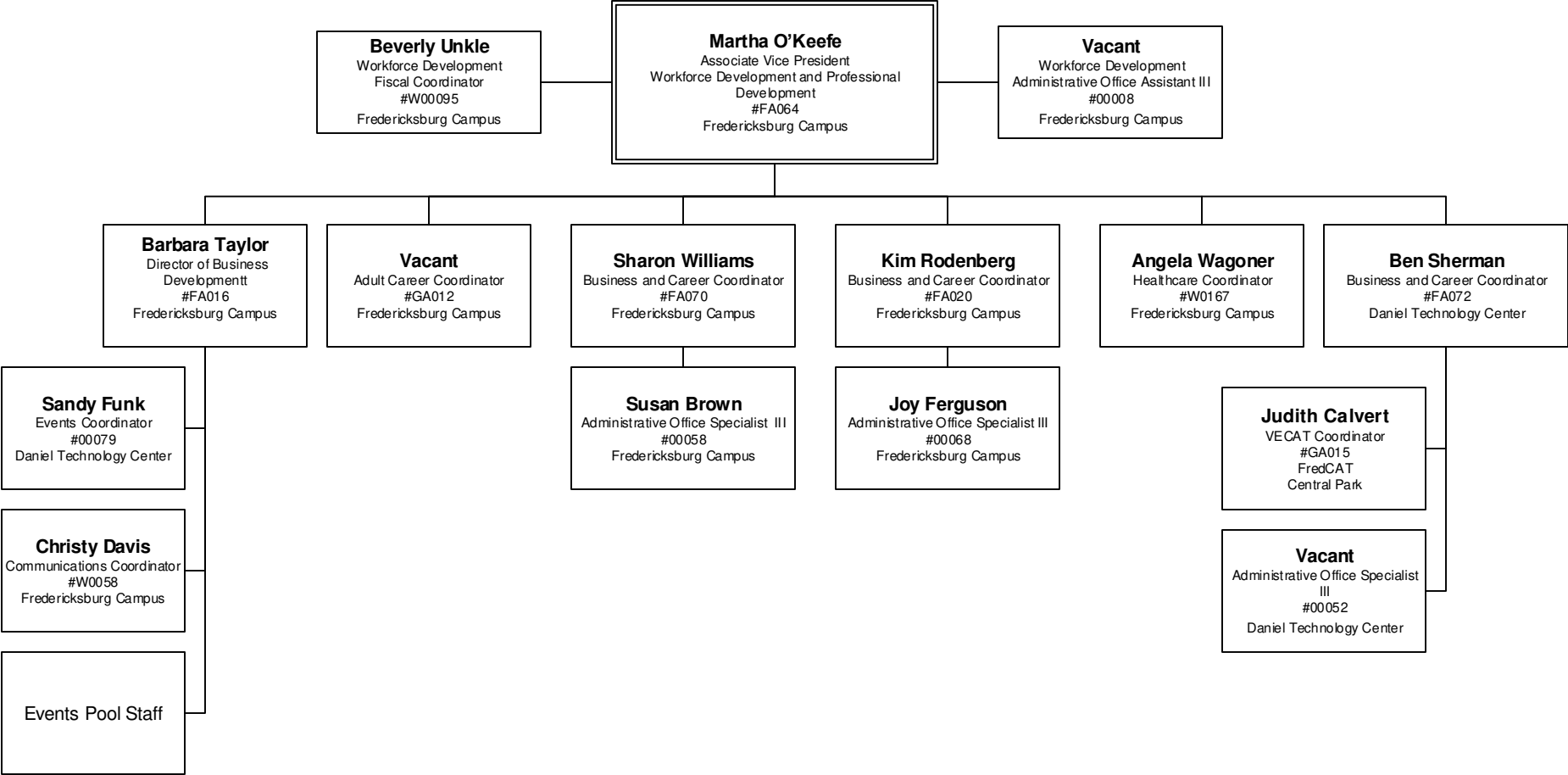


# ACADEMIC AFFAIRS AND WORKFORCE DEVELOPMENT LIBRARY SERVICES



# ACADEMIC AFFAIRS AND WORKFORCE DEVELOPMENT

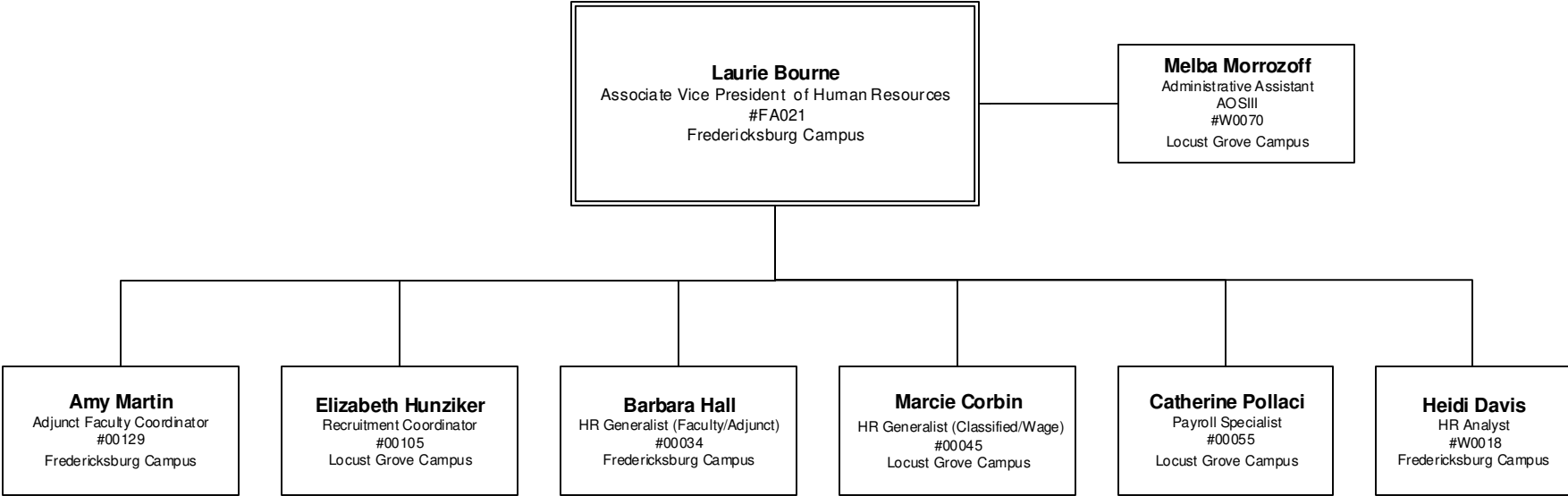
## WORKFORCE DEVELOPMENT AND COMMUNITY



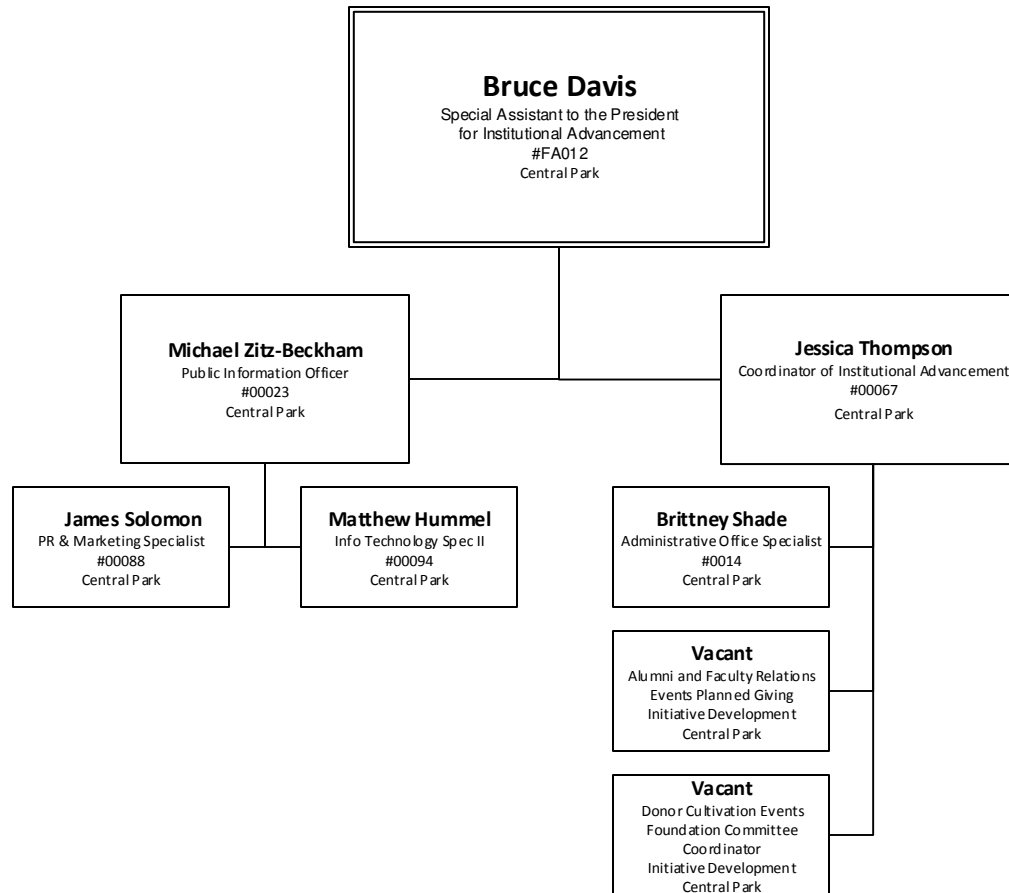


# OFFICE OF THE PRESIDENT

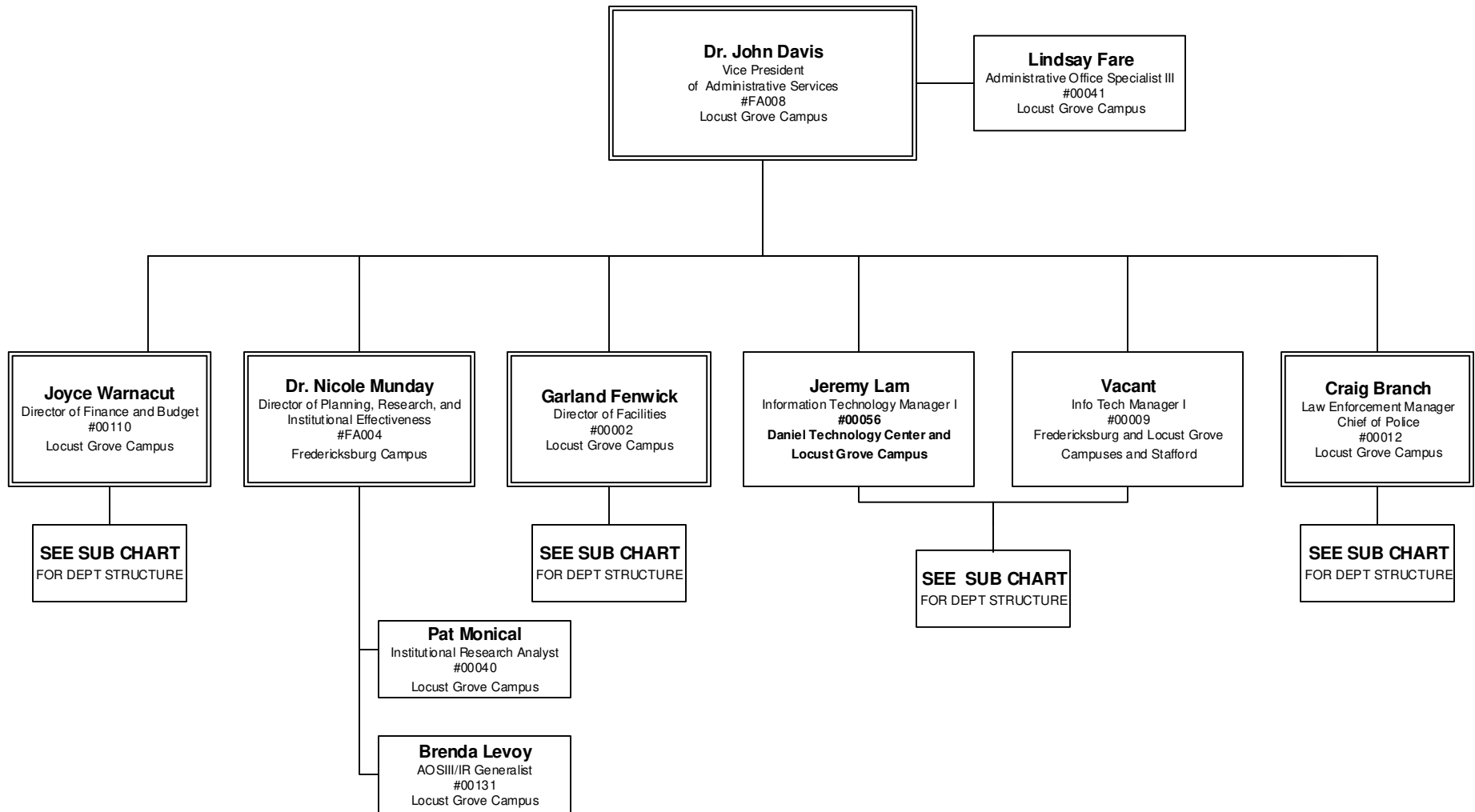
## Human Resources



# INSTITUTIONAL ADVANCEMENT

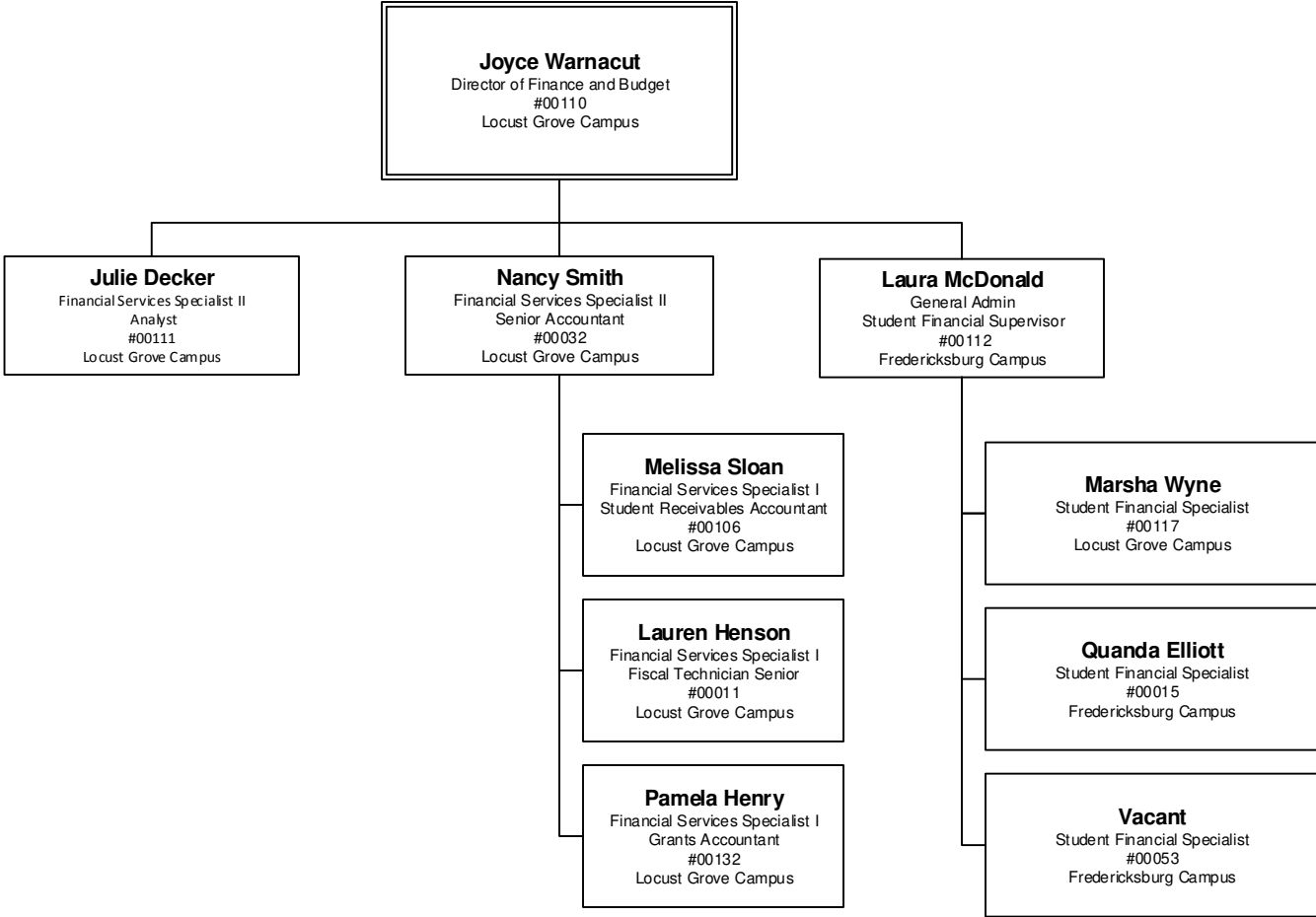


# ADMINISTRATIVE SERVICES



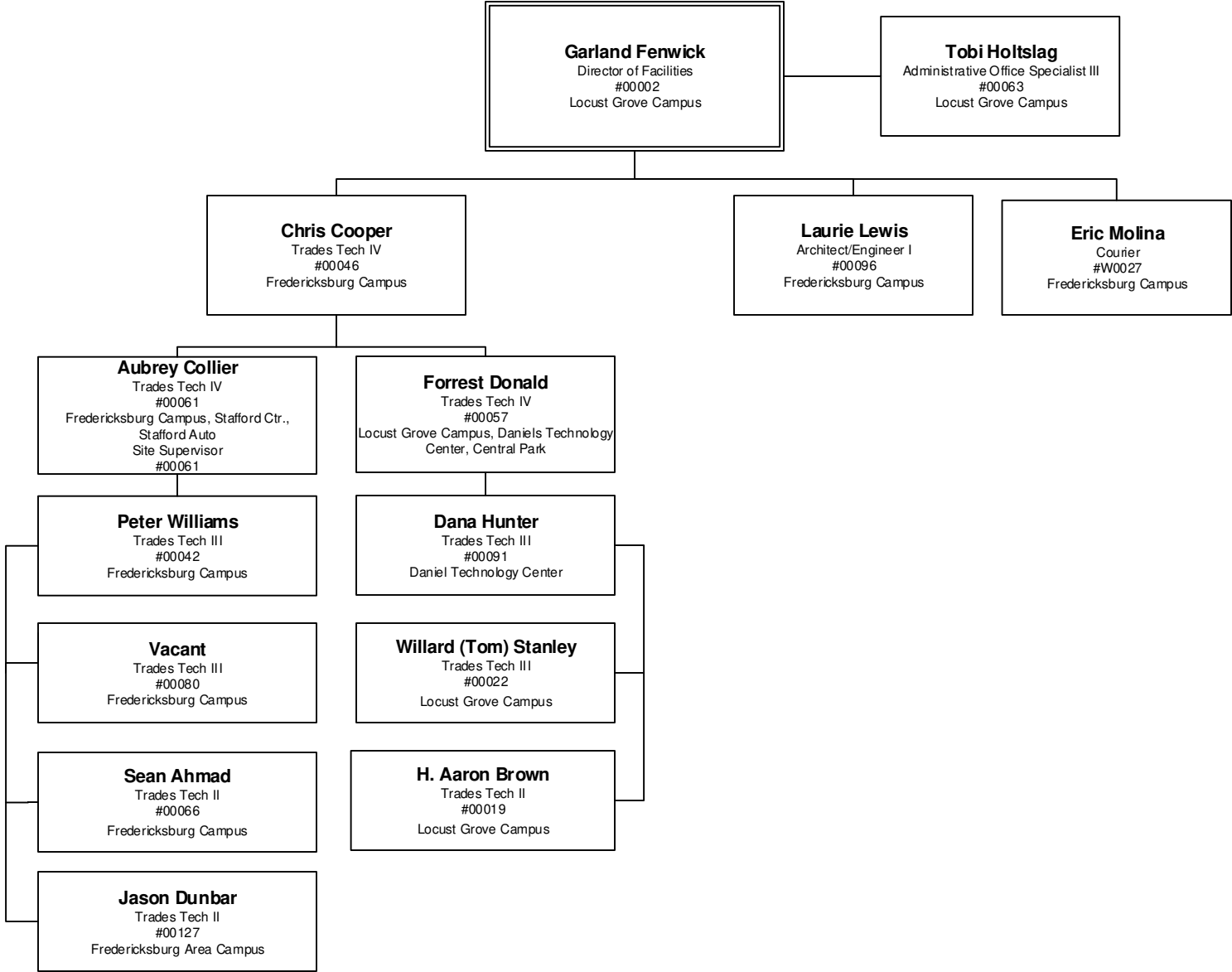
# ADMINISTRATIVE SERVICES

## BUSINESS OFFICE



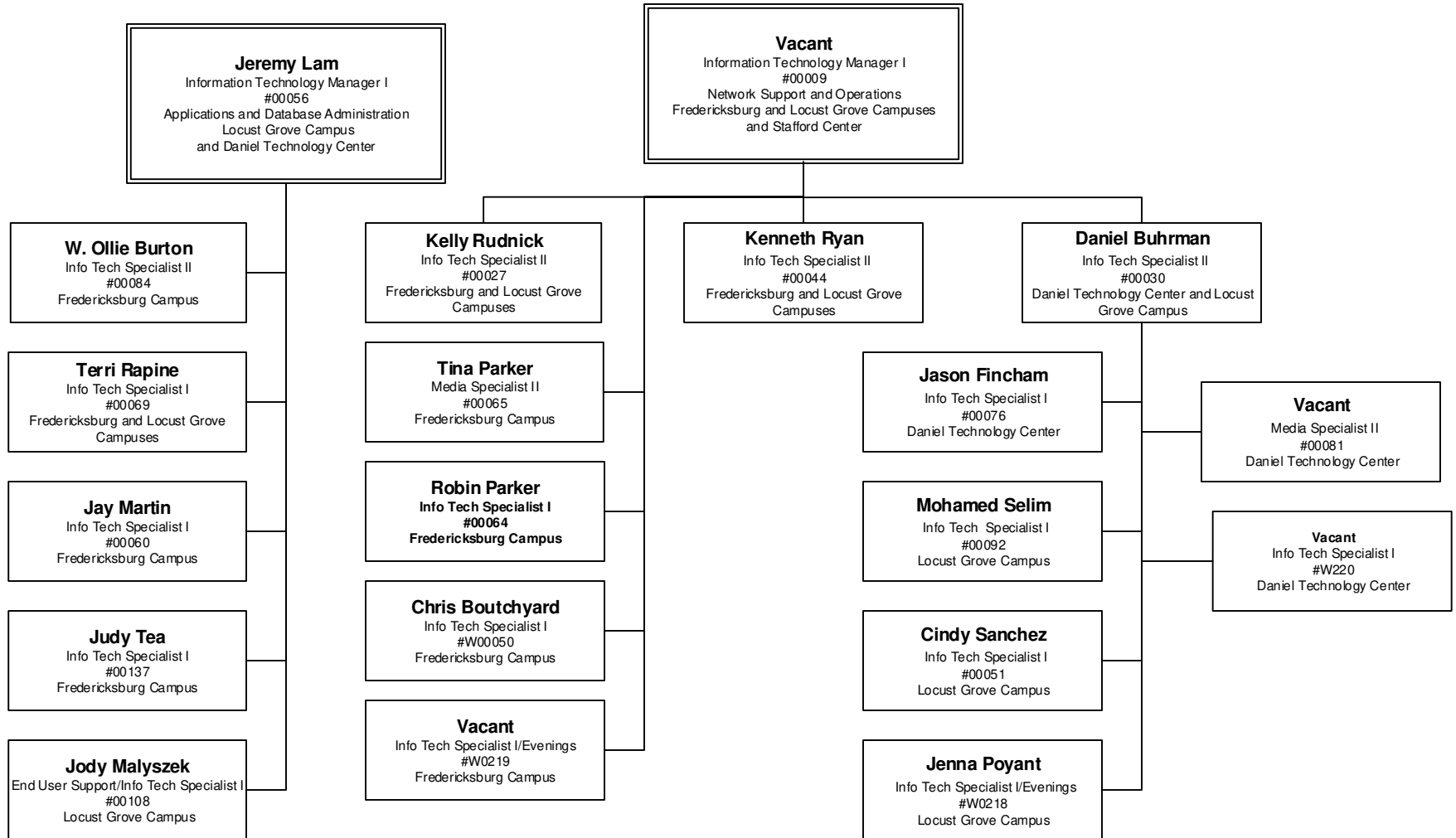
# ADMINISTRATIVE SERVICES

## FACILITIES MAINTENANCE



# ADMINISTRATIVE SERVICES

## INFORMATION TECHNOLOGY



# ADMINISTRATIVE SERVICES

## POLICE

